

FOCUS

Newsletter of the Mayslake Nature Study and Photography Club
Hosted by the Forest Preserve District of DuPage County
Visit our website at www.naturecameraclub.com



Highlights

April 2
Triple Header
Lou Petkus

April 16
Annual Member's Dinner
Todd Gustafson
Speaker

May 7
"Tips, Tricks and Techniques"
Bob Benson

May 21
TBA

June 4
Bird Migration
Willowbrook Wildlife Center
Ron Sklemy

June 18
The Prairies and Woodlands
of Fermi Lab
Bob Shaw

"Triple Header"

Lou Petkus

We have three items on the agenda for the April 2nd program.

First up – A Swap and Shop – The spring photography season is almost here and this is your opportunity to sell or swap some of your surplus camera gear and pick up some new items to fill your camera bag!

Bring up to five items to sell or swap. We will have tables set up for you put your items on. So come early to get the best bargains.

Second up – An interview with one of our members. This member is fairly new to photography, at least compared to some of our old timers, uses fairly modest equipment and has racked up quite an impressive list of awards. Can you guess who? Come to the meeting to find out who this member is.

Third up – John Janunas will make a short presentation on bird photography. He lives in Batavia and spends quite a bit of time photographing around the Fox River. I am guessing he just might have some images of the eagles taking up residence there!

Nominating Committee Slate

2012-2013

Sue Gajda

The formal election of the Board and Chairpersons for the upcoming year (starting May 1) will be held at the April 2 meeting.

The slate as presented by the Nominating Committee at the March 5 meeting is:

President: Sue Gajda
VP - Photography Programs: Lou Petkus
VP - Nature Programs: Harry Hitzeman
Secretary: Fran Piepenbrink
Treasurer: Karin Grunow

Chairpersons:
CACCA: Chuck Klingsporn
Competition: Sheila Newenham
Conservation: Open
Education: Fred Drury
Equipment: D. Demet/David Schooley
Exhibits: Janice Henry
Forest Preserve Liaison/Past President:
Tom Richardson
Membership: Bill Dixon
Newsletter: Diane Hamernik
Outings: Gail Chastain
Social Events: Barbara Dunn
Webmasters: Suzanne Zumstein/Steve Baginski

Club Officers

President: Sue Gajda
segnet@aol.com
Immediate Past President: Tom Richardson
rtom.richardson@gmail.com
Vice-President, Nature: Pat McPherren
pmcpherr@mac.com
Vice-President, Photography: Lou Petkus
loupet@gmail.com
Treasurer: Gary Saunders
gmsaunders@att.net
Secretary: Fran Piepenbrink
frannep@netzero.net

2011-2012 Chairpersons

CACCA Delegate: Chuck Klingsporn
northrockies@aol.com
Competition: Sheila Newenham
drsnewenham@gmail.com
Competition Assistant: Marie Ward
marie@mariewardphotography.com
Competition Assistant: Rose Janulis
rmjanulis@comcast.net
Conservation: Dan Hollister
dghollistr@aol.com
Display: Janice Henry
jnhenr@att.net
Education: Fred Drury
fred@marklandimagining.com
Equipment: Dee DeMet
dcdemet@ameritech.net
Forest Preserve Liaison: Tom Richardson
rtom.richardson@gmail.com
Membership: Bill Dixon
bmaxdixon@sbcglobal.net
Membership Assistant: Karin Grunow
kgrunow63@att.net
Outings: Gail Chastain
gachastain@hotmail.com
Publications: Diane Hamernik
d.hamernik@comcast.net
Social: Karin Grunow
khtunoe63@att.net
Webmasters: Suzanne Zumstein
s.zumstein@comcast.net
Steve Baginski
spbaginski@hotmail.com

Leave your camera, tripod, hiking boots & vest at home and join your fellow Club Members for an evening of camaraderie and a program featuring renowned nature photographer Todd Gustafson.

Monday, April 16, 2012

Social time starting @ 6:30, Dinner promptly @7:00

Registration form Attached or available on the web site (click on Officers/Calendar)

Todd Gustafson has been photographing nature, wildlife and natural history for the last decade with great success. Specialties include East Africa (animals, birds and native people) and North America (wildlife, landscapes and cityscapes). Capturing beautiful light on beautiful subjects in an artistic way is a continuous personal goal. Todd photographs and works as a clinician/teacher for NIKON Corporation.

Photo History

U.S. destinations for nature, wildlife and travel photography have included the Arizona desert, the Rocky Mountains, San Francisco, Washington, DC, New England, New Orleans, and Florida. Foreign destinations include The Bahamas, Greece, Italy, Ecuador, United Kingdom, Grand Cayman, Galapagos Islands, Fiji, the Cook Islands, Australia, Western and Eastern Europe, and Galapagos Islands, Brazil, India, and Central America. Having grown up in Tanzania, East Africa is a specialty. Knowledge of habitat and behavior as well as social interaction with local people has resulted in photographically rewarding safaris to Tanzania, Kenya, Uganda, Zanzibar, Rwanda and Madagascar.

Todd works with photographers as a guide and photo instructor in East Africa, Europe, Central America, and the United States. His agents are Panoramic Images (Chicago), Danita Delimont (Seattle), Natural Selection and Getty Stock Agency (New York). Todd's photography is also represented by National Geographic Society.

Publishing Highlights

- Photographs from past safaris are published in "Wilderness Travel" and United Travel Group catalogs.
- Many of Todd's images are used by The Discovery Channel as signature images and in traveling exhibits.
- The Smithsonian Institution Museum of Natural History has a permanent exhibit "African Voices" that features Gustafson's photographs.
- The St. Louis Children's Memorial Hospital has a wing designed in an African motif that uses Todd's images.
- Other images appear in The Conserve School's (Chain of Lakes Wisconsin) 2,000-sq. ft. nature museum dedicated to conservation education.

- Hundreds of images appear in the new Africa House (Regenstein “African Journey”) at the Lincoln Park Zoo (Chicago).
- Todd is also published in the National Geographic Desk Diaries and African Publishing Group’s “Game Parks of Tanzania”.
- The spring 2004, 2005 and 2008 NIKON Full Product Guide feature Todd’s photos with the 2005 front and back cover wrap around.
- Todd’s work has also been used extensively by the United Nations in publications for Tanzanian development.
- Todd’s “Flamingo Dance” won Runner Up in the 2006 BBC Wildlife Photographer of the Year and is on display at the Natural History Museum in London.
- “Lion Cub” was chosen by Smithsonian as one of “Nature’s Best” in 2007

New Release:

- “A Photographer’s Guide to the Safari Experience” an information and site guide

Upcoming projects include:

- “Elemental East Africa” a coffee table picture book.
- An HD video series produced by PBS in St Louis “Photographing on Safari”
- On screen expert on the Great Migration for National Geographic series dealing with nature’s mysteries.

Cost for dinner is \$29.00. Please send your reservation as soon as possible to reserve your spot.

My name as it will appear on a place card _____

My dinner choice: ___ Chicken ___ Salmon ___ Beef ___ Vegetarian

My guest’s name as it will appear on a place card _____

My guest’s dinner choice: ___ Chicken ___ Salmon ___ Beef ___ Vegetarian

Send checks payable to: Mayslake Nature Study & Photography Club

Karin Grunow

4409 Joliet Avenue

Lyons, IL 60534

Yahoo

Karin Grunow

All Mayslake Nature Study & Photography Club Members are invited to join the new MNSPC Yahoo Group. The Yahoo Group is a place to ask or answer your fellow club members' photography related questions, post photos and share files and links. Use the group to share favorite photo locations or even invite fellow club members to join you on an outing!

Here is the link to our Yahoo Group. <http://tech.groups.yahoo.com/group/MNSPC/>. Please note that our group is not public and you do need to be a member of Mayslake Nature Study & Photography Club to view anything but the home page. Click on the join button on the Yahoo page or contact Karin Grunow at ***Karin.Grunow@att.net*** for an invitation.

Volunteers Needed

Bob Pizzurro

It is time again to line up volunteers for our "Introduction to Digital Photography" class. We need club members to help on the first night with the camera workshop. We will meet on Monday evening, April 9th in the library at Mayslake at 7:00 PM. We help the beginning photographers negotiate the functions on their cameras. The volunteers should be done by 8:00 PM. Contact Bob Pizzurro at Rp45@aol.com

Competition News

Shelia Newenham

Glennie Nature Salon

Our club participated in the 32nd Glennie Nature Salon. As in past years, I submitted one image from each of ten different MNSP photographers. There were entries from 94 clubs in 36 countries totaling 940 images. We finished 45th overall. Not bad given the caliber of the competition. Congratulations to Greg Hull (Prothonotary Warbler) and D. DeMet (Hey Mom, Where's Mine?) for earning acceptances! Full details can be found at <http://mvcameraclub.org/Glennie/glennie-2012-results.htm> Winning images (awards and acceptances) will be displayed there shortly.

PSA Competition

The results from the January PSA Interclub Nature Competition held in the United Kingdom are in. Thirty-eight clubs participated with 228 images in all. Congratulations to Tom Richardson who earned an honorable mention for "Peak Reflection". Mayslake is currently in second place overall after the first two competitions!!

Mayslake Competition

Our 4th and final competition of the season took place March 19th. There were 116 digital images and 42 print images. Our judges, Pat McPherren, Chris Aquino and Mark Southard, did a fantastic job with so many outstanding images. Thank you to Marie Ward, Barbara Dunn, Karin Grunow, Marcia Nye, Chuck Peterson and Harry Hitzeman whose help I couldn't have done without. Congratulations to the following who earned honors:

Class A Digital Awards

John Fan for "Bisti Blue"

Rich Witkiewicz for "Columbine Reflections in Raindrops"

Tom Richardson for "Horseshoe Bend Sunset"

Class A Digital Honorable Mentions

Fred Drury for “Full Air Brakes”

John Fan for “Tablet of Stone”

Rich Witkiewicz for “Cinnamon Teal”



Raindrops©
Rich Witkiewicz

Class B Digital Awards

Bill Dixon for “Eye Contact”

Gary Saunders for “Gray Day at Grey Glacier”

Steve Ornberg for “Here’s Looking at You”

Fran Piepenbrink for “On the Move”

Dennis Walz for “Saguaro in the Sun”

Class B Digital Honorable Mentions

Pei Tang for “Don’t Move”

Sue Gajda for “Resting Frigate”

Harry Hitzeman for “Borrego Badland”

Fran Piepenbrink for “Preening”

Harry Hitzeman for “Stairway to Heaven”



Peak Reflection©
Tom Richardson

Class C Digital Awards

Marcia Nye for “Back Off”

Chuck Peterson for “Blue Flag Iris”

Steve Bartos for “Painter”

Steve Mayer for “White Sands Dunes”

David Schooley for “Sneffels When the Light is Just Right”

Greg Hull for “Prothonotary Warbler”

Greg Hull for “Yellow Crowned Night Heron”

Greg Hull for “Loggerhead Shrike”



Blue Flag Iris©
Chuck Peterson

Class C Digital Honorable Mentions

- Barbara Dunn for “Tropical White”
Steve Mayer for “Bosque Reflections at Twilight”
David Schooley for “Trout Lilly”
David Schooley for “Hey, Do You Have a Cracker?”
Chuck Klingsporn for “Elakala Falls”
Chuck Klingsporn for “Here’s Looking at You”



Painter©
Steve Bartos

Class A Prints Awards

- Fred Drury for “Tukangbesi Corals”
Tom Richardson for “Best Catch”
Class A Prints Honorable Mention
Fred Drury for “Jasper Pulaski, December 12, 2011”



White Sands Dunes©
Steve Mayer

Class B Prints Awards

- Bill Dixon for “Winter Solstice”
JoAnn Barnes for “Otis”
Barbara Dunn for “Lotus Beauty”
Chuck Klingsporn for “Blue and Gold”
David Schooley for “Snow on Snow”
David Schooley for “Dragon Lilly”



The All Seeing Eye©
David Schooley

Class B Prints Honorable Mentions

- Noriko Buckles for “A Great Blue Heron”
Sue Gajda for “Sally the Crab”
David Schooley for “Screech Owl”

Willowbrook Wildlife Center

Trip Report

Gail Chastain

It was 30 Mayslake Members that over 2 days headed to the Willowbrook Wildlife Center for a Birds of Prey Photo Shoot.

Both outings, February 26 and March 24 were attended by 15 members. Each time 4 different birds were brought out for us to photograph. Although not trained models, these birds are familiar with people in that they are a part of the Willowbrook Education program, and almost seemed to know what role they played.

Willowbrook Wildlife Center, located in nearby Glen Ellyn, is well-known as both a rehabilitation and education center and is operated by the Forest Preserve District of DuPage County. Be sure to visit the center to see the approximately 80 native animals on display both inside and out at Willowbrook. Their goal is to provide rehabilitation to native and passing migrant wildlife of DuPage county and education on the biological and ecosystems current and native to this area. These goals area achieved through their rehabilitation facilities and educational staff.

Mayslake members VERY MUCH appreciated the staff at Willowbrook and their willingness to provide this great photographic opportunity. Be sure to visit the Mayslake Website Trip Blog to see the images from both outings.



Chuck Klingsporn



Red Tailed Hawk©
Rose Janulis



Red Tailed Hawk©
Mary Lou Zbreski



Owl Handler©
Duane Heaton

TWO GREAT APRIL OUTINGS!!

Gail Chastain

Saturday, April 21, 2012 Bill Dixon will be our host for this first great outing that has three parts to it.

Part #1 - Black Partridge Forest Preserve

An 80 acre preserve in Lemont with wetlands, fen, and forest. With trails crossing many winding ravines, it's a great place for both flower and wildlife photography. The area was dedicated as the second nature preserve in IL in 1965 in order to protect its spring fed stream.

For those interested in Macro photography, Karin Grunow will be setting up a macro demonstration that will help and/or inspire you for the area.

Part #2 After a early morning at Black Partridge Preserve we'll head to breakfast to be ready for the next location.

Part #3 - Messenger Woods.

We'll finish up the morning and into the afternoon at Messenger Woods in Lockport. This area is one of Will County's oldest forest preserve sites and one of its most unusual. Today it's a total 946 acres and Messenger Woods is known throughout the region for its abundance of spring wildflowers that carpet the forest floor.

The preserve also has old groves of oak and maple trees amidst rolling Hills. With Spring Creek running through the preserve, cutting steep ravines through the hilly forest, there are lots of great photographic opportunities

Come to parts 1, 2, 3 or the whole time!!

For more information and/or to say you are coming, email: gachastain@hotmail.com

Sunday, April 29, 2012 - Duane Heaton will be the host for another great photography outing

It's a return to Crabtree Forest Preserve in Barrington for spring flowers, birds and more. Those of us that attended the New Year Eve Day trip to Crabtree, learned what a great spot it is. With more than 1000 acres set aside for the preserve there is many photographic opportunities for everyone. Forest, prairie, and marsh are just some of the sights. Spring flowers are known to carpet the forested areas, as well as the meadows and prairies.

It's also a great location for birding with a total of 263 bird species that has been observed and many also use the site for breeding.

It looks to be a great time of year to return to this location.

Duane will be setting up a macro demonstration that shows the use of extenders and LED lights. A great way to see if these tools are right for you.

For all those that can, we head for a late breakfast/early lunch nearby.

For more information on either and/or both, email gachastain@hotmail.com



Peregrine Falcon©
Critter

Previews!!

The Up and Coming Mayslake Outings

May 18-20 2012
Horicon Marsh, Wisconsin

Come for the day, come for the weekend, or make it an extended weekend.

Horicon Marsh is approximately 1 hour north west of Milwaukee, WI. At over 32,000 acres in size there will be lots to do. Horicon Marsh is the largest freshwater cattail marsh in the United States.

Let us know of your interest and more information will be coming your way. For more information such as directions and time, contact Gail Chastain at gachastain@hotmail.com

Saturday June 23 2012
The Prairies of Fermi Lab

Most don't know that Fermi Lab has been involved in restoration projects for many years now. With over 1200 acres involved in the restoration process, there is a lot to see. Join us for a visit to the wonderful prairies of Fermi. More information to come.

For more information such as directions and time, contact Gail Chastain at gachastain@hotmail.com

July 8, 2012
Anderson Japanese Gardens
Rockford Illinois

Sunday July 8, 2012, will be the date of a Mayslake Outing to Rockford IL, to see gardens that are internationally renowned as one of the premiere Gardens outside Japan. Experience the beauty and zen of these 14 acres of gardens with your fellow Mayslakers.

More information to come.

Saturday August 11, 2012
Daybreak, Alma Illinois

Return to DAYBREAK!! For some great images of butterflies and dragonflies. Saturday, August 11 will be the date we'll head down to Alma, IL (south central IL) to the home of Richard and Susan Day, for a day of photographing all the wildlife that comes to their 63 acre home.

Let us know of your interest and more information will be coming your way. Space is limited.

Contact Gail Chastain at gachastain@hotmail.com



In the last Lightroom column, I described how to import images into the Catalog and how to add keywords. In this column, I'll show you how to use the keywords to search for images. Then I'll describe some Lightroom features that help one determine those images which constitute the best of a shoot.

Keywording Revisited

A couple of words by way of reviewing the process of keywording. In the last column I showed how to do keywording in a hierarchal manner; the objective being to minimize the number of keywording entries. The idea was to apply keywords to groups of images, and only individually where that was the only alternative. The process also took advantage of Lightroom's 'Keyword Suggestion' feature.

Level 1 keywording started at the import stage with the application of those keywords which applied to the entire group of images being imported. This is especially effective when the shoot is from a single location, even more so when there is a common subject. The next level of keywording (Level 2) is used for multiple images from a single shoot; typically images including a common subject. A final round of keywording (Level 3) is by-image, where unique keywords are necessary. At both Level 2 and Level 3, the Keyword Suggestion feature is often helpful.



Figure 1 shows the Library - Grid view. Notice that all 50,000+ photographs in the Catalog are selected.

Searching (aka Filtering)¹

The reason for Keywording is to facilitate searching for images; in other words finding one or more images within a Catalog. The Lightroom Filter panel which is just above main image window is where one applies filtering. Filtering can be by Text, Attribute or Metadata, or by more complex combinations of more than one of these. **Figure 1** shows a grid view of my

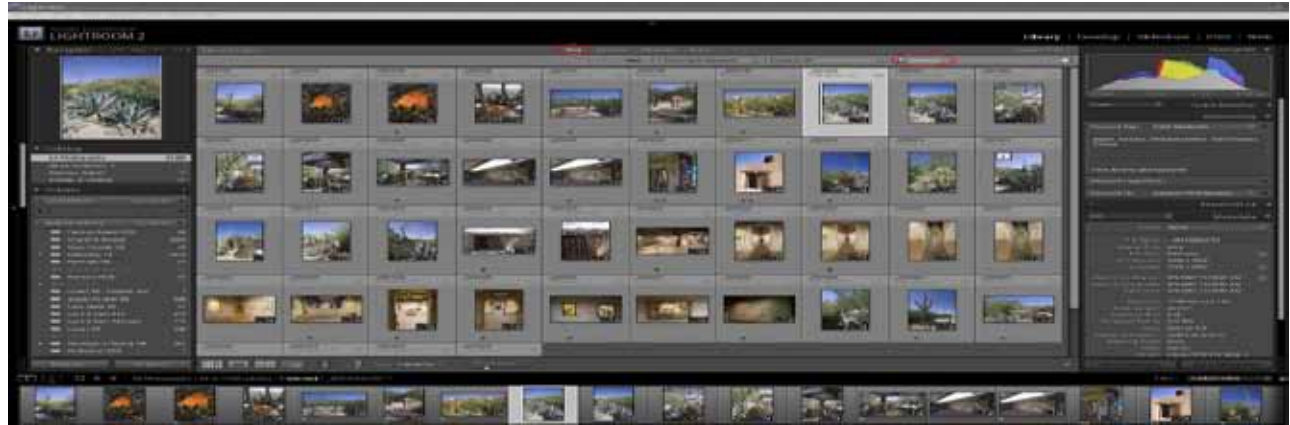


Figure 2 shows the photos found by the first search (see the red ovals). The search was by 'Text' for all photos including the keyword 'DeGrazia'.

Catalog which contains over 30,000 images. **Figure 2** shows the results of a Text search for all the images containing the keyword 'DeGrazia'. **Figure 3** is a refinement of the previous search; in this case the search is for the DeGrazia images containing both the keywords 'Agave' and 'DeGrazia'. Notice that some of the photos in **Figure 4** have a single star just beneath the photo; some have two stars. This is one method for rating photos, the idea being that a photo having one star is a superior image and one having two stars is even better (Ratings will one of the subjects of the next Lightroom column). Stars are 'Attributes' and



Figure 3 shows the photos found by the second search (see the red ovals). The search was by 'Text' for all photos including both the keywords 'DeGrazia' and 'Agave'.

¹ In a recent issue (June, 2011) of Photoshop User magazine, Rob Sylvan has several 'keyboard shortcut reminders' that are worth noting. He points out that the Library filter bar which is normally positioned above the thumbnails in Library's Grid view (G) can be hidden or shown by pressing the Backslash key (/). Hiding the filter does not turn off the filter being applied. He also points out that the Toolbar (below the main window) can be toggled in and out of view using the keyboard shortcut T. If your Toolbar is visible but certain tools are not showing, click on the down pointing arrow head at the far right end of the Toolbar and select the tools from the menu. In the same article he points out that it's possible to hide many of the individual panels from view. We're not talking about collapsing the panels, but outright removal from the panel group. If you find some day that a certain panel has vanished from the interface, all you need to do is do to 'Windows> Panels' and select the wayward panel to bring it back. In addition, you can hide (or show) a panel by Right-clicking a panel header and selecting the panel from the contextual menu that appears.

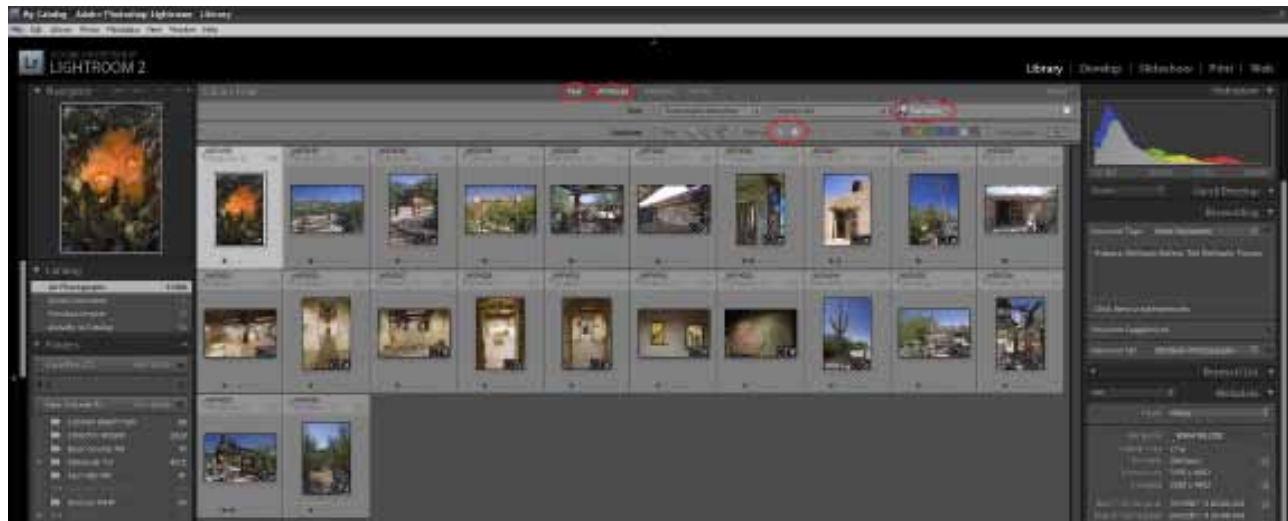


Figure 4 shows the photos found by the third search. The result shows all the 'DeGrazia' photos which were rated with one or more stars.

are searchable. **Figure 4** shows a further refinement of the **Figure 2** search in which only the DeGrazia images having one star or more have been selected.

One can also search by Metadata. **Figure 5** shows a search of the entire Catalog for those images shot in 2007 with the Canon 1Ds MK2 at an ISO of 1600.



Figure 5: Here the search was by Metadata. The search identified all the photos in the Catalog which were 1) shot in 2007, 2) by the Canon 1Ds MK2, and 3) at an ISO setting of 1600.

View Modes in Library

One very often shoots multiple images of a subject with the intent of later editing those images and deleting all but the 'best of the shoot'. Lightroom has several Library features which are intended to assist that editing process.



Figure 6 shows the four View icons along the left side of the bar at the bottom on the Library module.

Icons along the bottom of the Content panel (**Figure 6**) are module specific. Focusing on the Library module, the first four icons on the bottom bar are (from the left): Grid View, Loupe View, Compare View and Survey View.

Grid View shows you thumbnails of all the images in the Folder selected in the left panel. You can adjust thumbnail size by dragging the Thumbnail slider on the right side of the bar at the bottom of the main image window. You can switch between Loupe and Grid Views by using the 'E' and 'G' keys as respective shortcuts.



Figure 7 shows a selection of view options which can be applied to the main image window (in Loupe view). Clicking the double arrow on the right opens a drop down of several different levels of magnification.

Figure 7 shows a close up view of the top of the left panel in **Figure 1**. The selections to the right of the word 'Navigator' allow you to size the image in the main image window in Loupe (E) view. The last of these selections, the double ended arrow reveals a drop down list of magnification choices. To select a different image for the main image window, click that image in the film strip. You will likely find the arrow keys more convenient when you examining images for the first time and are trying to sort the keepers from the rejects.

Compare View

Compare View is one method for evaluating a group of images. It allows a direct comparison of an unlimited number of images, two at a time and provides the ability to zoom in on both images simultaneously. The additional features of Compare make it somewhat more useful, and at the same time somewhat more complex than Survey view which will be discussed next.

Figure 8 is a Grid View of a series of images of Burrowing Owls. These 24 images are the remainder of about three times that number some of which lacked good focus or were essentially duplicates of those remaining. **Figure 9** shows Compare View being applied to the Burrowing Owl images. In **Figure 8**, the first of the 24 images (5288) is highlighted. Therefore that image is placed on the left side of **Figure 9** and designated the 'Select', and the second of the 24 (5291) is placed on the right and designated the 'Candidate'. The advance arrow (labeled 1 at the bottom right in **Figure 9**) has been used to move forward to the next (third) image in the sequence (5296) making it now the Candidate. This Candidate is



Figure 8 shows the remaining 24 Burrowing Owl images. These owls occupy vacant lots around Cape Coral housing developments just north of Ft. Meyers, Florida. The objective is to use Compare View to select the best of the group.



Figure 9 is the first Compare. The Compare tools are highlighted in red at the bottom of the screen capture. By default, the 1st image in the sequence has been designated the Select on the left. The right advance arrow (1) has been used to advance to the 3rd image in the sequence. This Candidate image is superior to the Select, and the next step is to promote it to the left side. This can be accomplished in two ways as shown in **Figure 18** and **Figure 19**.

superior to the current Select. There are two ways to elevate the Candidate to Select. **Figure 10** shows how the Swap switch (labeled 2) makes the change. It simply swaps the two images, moving one to the right and the other to the left. **Figure 11** shows the alternate behavior of the other switch (labeled 3). It moves the Candidate on the right into the Select position, but replaced the Candidate with the next (fourth) image in the sequence (5297).



In **Figure 10** (above), the Swap switch (labeled 2 in **Figure 9**) has been used to reverse the image position in **Figure 9**, thus making what was the superior Candidate now the Select image. The Candidate is now 5288, the 2nd image in the sequence.

Figure 11 (above) uses the other switch (labeled 3 in **Figure 9**) to 'Make Select'. Like Swap, Make Select moves the Candidate to the Select position. Make Swap however chooses the next image in the sequence which follows the (now) Select (4th) as the new Candidate. Unless you want to review previous images again, this is likely the preferred behavior.



Figure 12 shows Compare View use with the Zoom Lock ON. Both images are zoomed to 1:1 and the position shown in the image window is the same (see outline in Navigator at the top right). The zoom comparison is especially appropriate when some feature of the image (e.g. eye focus) is critical. In this instance both images show good focus but the Select shows both owls looking towards the camera.

Figure 13 shows Compare View use with the Zoom Lock OFF. Click on the lock icon to change the lock from ON to OFF. With the lock OFF, the zoom amount and position in the two images are independent of one another. If you look closely, you'll see a faint white line around the Candidate indicating that it is the selected image, and meaning that the zoom control is currently active on that image. Clicking on the Select image makes the zoom tool active there.

The tools on the left side of **Figure 9** (labeled 4) provide the zoom function. When the Zoom Lock in the ON position, the zoom slider controls the zoom amount and position for both the Select and Candidate images. The Navigator panel has been included in **Figure 12** to show the relative position of the zoom (see the white square). Placing the mouse on either to the images and dragging allows one to reposition the zoom (on both images simultaneously).

With the Zoom Lock in the OFF position the amount of zoom and the zoom location are independently controlled. **Figure 13** shows an example of this behavior.

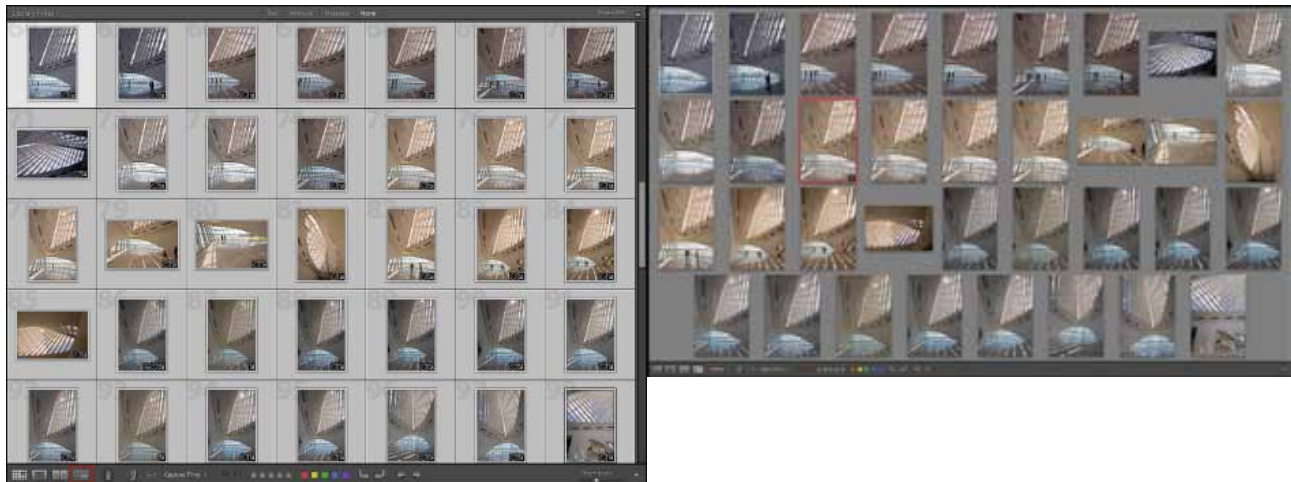


Figure 14 (left) shows a Library Grid View of a selection of images on the interior of the Milwaukee Art Museum, most of which included a sunburst as a design element. The Survey View icon is highlighted in red on the Tool Bar. **Figure 15** (right) is the initial Survey View which shows all of the selected images as large as is possible displayed on a Lightroom screen which has been configured (keyboard shortcut <Shift><Tab>) to the minimum number of panels. Notice that the with the mouse over the image 3rd from left in the 2nd row, a small square containing a white 'X' is visible in the lower right corner. Clicking on the 'X' will exclude that image from the Survey.

Survey View

Survey View is an alternate way to examine a group of similar images and select the best amongst them. This is especially useful when the images to be surveyed are not in a continuous sequence in the filmstrip. **Figure 14** shows a number of images from a shoot at the Milwaukee Art Museum. Some, but not all of these images were composed to include the sun as a design element.

The objective is to pick the best of that group. Notice that all of these images have been selected. To view them in Survey View, click on the 4th icon from the left in the tool bar at the bottom of **Figure 14** or press the keyboard shortcut 'N'. It's helpful to use the entire screen for Survey View and you can do this by using the command: 'Window: Panels>Toggle All Panels' (or using the keyboard shortcut <Shift><Tab>). The result is **Figure 15**. If you mouse-over an image, Lightroom reveals a small black square containing a white 'X'. If you

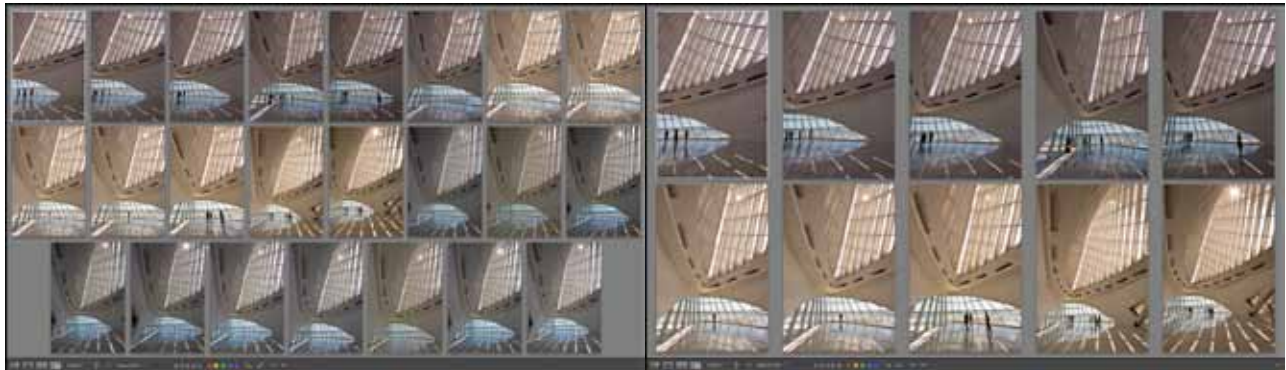


Figure 16 shows the images remaining in the Survey after excluding those images which did not include a sunburst design element and those not shot in a vertical format.

Figure 17 (above) shows the Survey View still further reduced by excluding those images which did not contain people. **Figure 18** (below) is the final view in this Survey sequence. Here there are only three remaining images. Each has been flagged as a Pick as you can see in the thumbnail view.

click on that 'x', then that image will be removed from the Survey (but not from Lightroom). There are quite a few images which do not contain the sun as a design element and one image which is a horizontal and so does not 'fit the mix'. Removing those images from the Survey produces **Figure 16**. Lightroom takes advantage to the reduced number of images and uses it to increase the size of the remainder.



Some of the remaining images contain people and some do not. If you decide to exclude those images that do not contain people because they are too sterile, **Figure 17** is the result. Clearly it's possible to continue to refine the selection until a minimum number of candidates remain. **Figure 18** shows such a result: several images were eliminated because people near the edge of the image were distracting, and a couple because the position of the sun was too near an edge of the image.

It's possible to identify each of these three images as a Pick. The white line around the right-most image in **Figure 18** shows that it is currently active in the filmstrip and clicking 'P' adds a White flag to that thumbnail. You can see in the filmstrip that the other two images have been similarly identified as Picks. Once you've become used to the mechanics of the process, you'll find it's a quick and efficient way to sort through a number of like images and determine which are the superior results.

In the next Lightroom column, I'll show you some alternative rating systems along with my preferred procedure. In addition, I'll explain Badges and Stacking as well as the use of the Painter Tool.